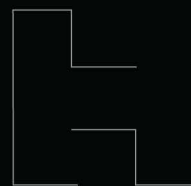


HEARNNE® MINIMAL SYSTEM



HEARNNE
ALUMINIUM SYSTEMS

VISTA



3

Minimalism in design is at the core of the Hearnne sliding and fixed minimal system. The frameless structure, characterized by slim profile geometry, seamlessly integrates with floors, ceilings, and walls, fostering a smooth indoor-to-outdoor transition.

This innovative approach not only prioritizes aesthetics but also allows ample natural light to flood the living spaces.

Architects, planners, and clients alike will discover a plethora of design possibilities with this premium modular system. Our engineers meticulously attend to the minutest details, ensuring a perfect blend of design and precision. The use of top-quality materials, cutting-edge production processes, innovative concepts, and the skilled craftsmanship of our team contribute to the excellence of the Hearnne minimal system.

MADE IN
UNITED KINGDOM





minimal windows®

DESIGN





Frameless

The frame's dimensions have 20 been reduced to a mere mm, enabling effortless integration into the floor, ceiling, and walls. What remains visible are the slender 20 mm leaf profiles. This design allows for an unobstructed flow of light with a glass proportion of up to 98%.

Large-scale

Sliding doors can be extended to cover an area of up to 12 square meters, while fixed windows can span up to 18 square meters. The maximum height for sliding doors is 4.5 meters.

Modular

The extensive range of practical configuration options caters to all your needs. You can opt for sliding systems with up to four tracks, paired with fixed panels, or choose interior/exterior corners without any obtrusive posts.

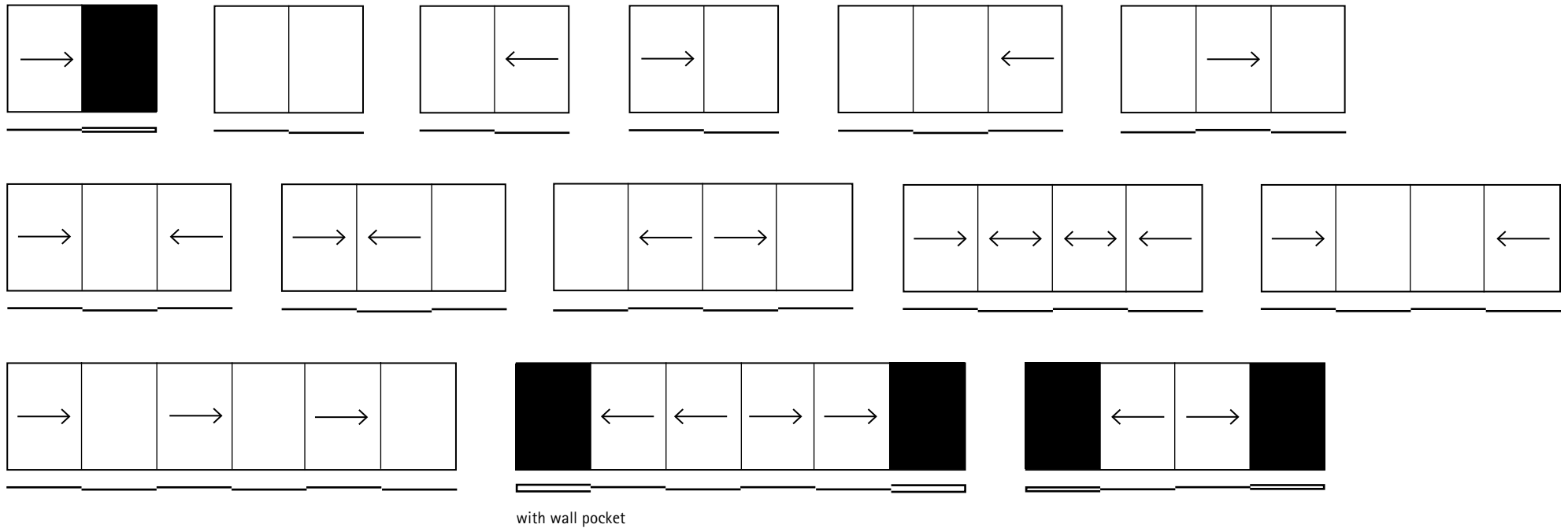
Individual

Select from a wide array of RAL or anodized color options, as well as a stainless steel finish. This allows the minimalistic aluminum profiles to be perfectly and uniquely tailored to the property. Glass facades can be customized to harmonize with any surroundings.

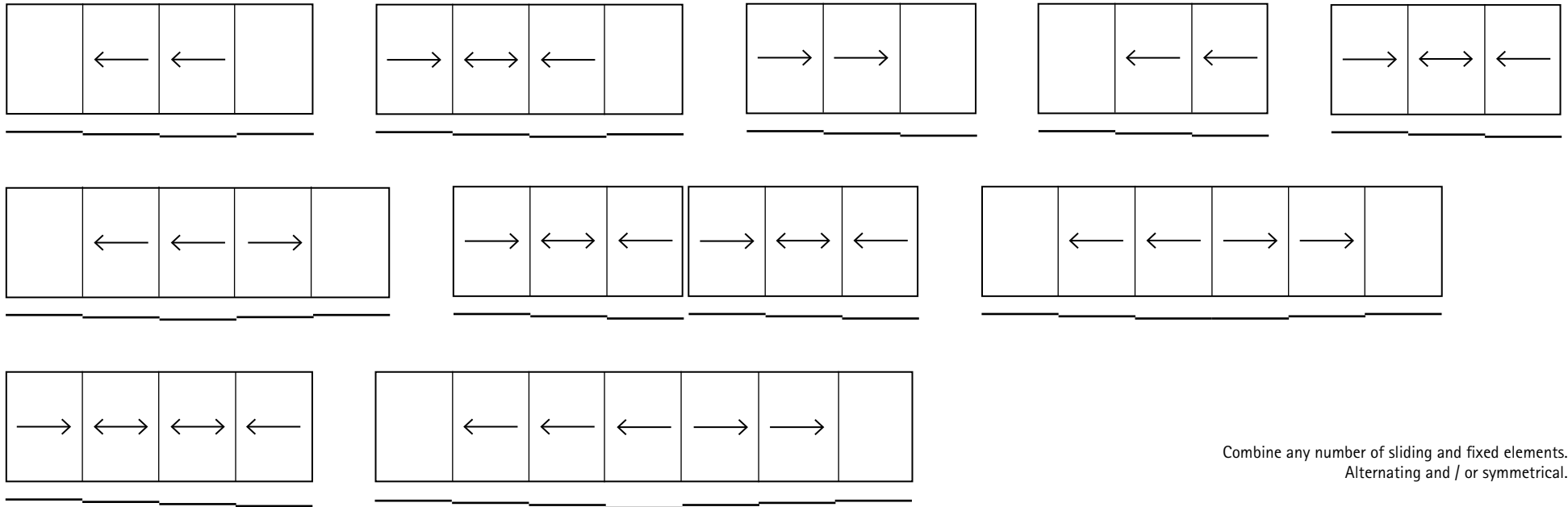
DESIGN



Examples of 1- and 2-track opening methods



Examples of 3- and 4-track opening methods

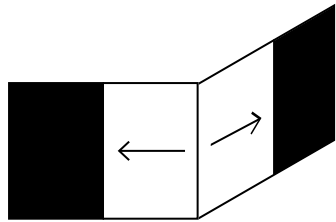




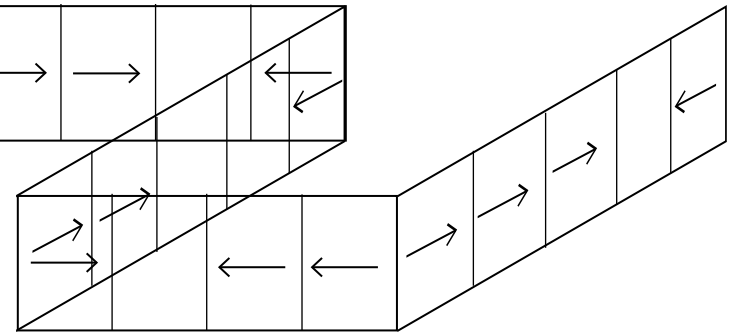
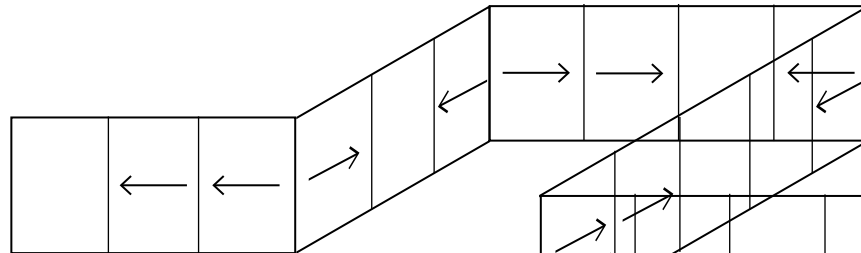
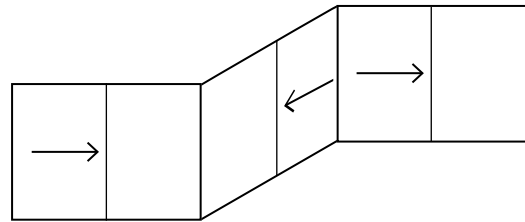
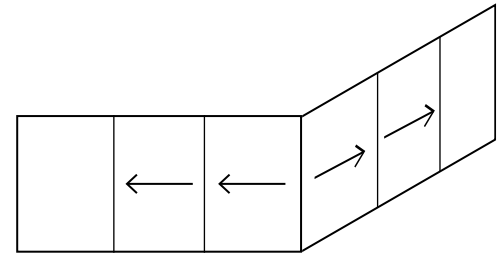
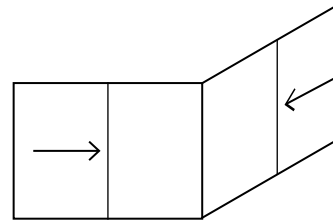
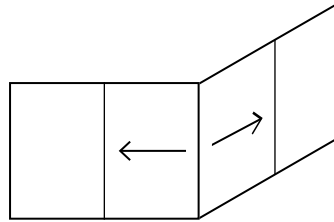
EVERYTHING IS BEAUTIFUL
AS FAR AS THE EYES CAN SEE

12

Internal and external post-free corners



with wall pocket



minimal windows®

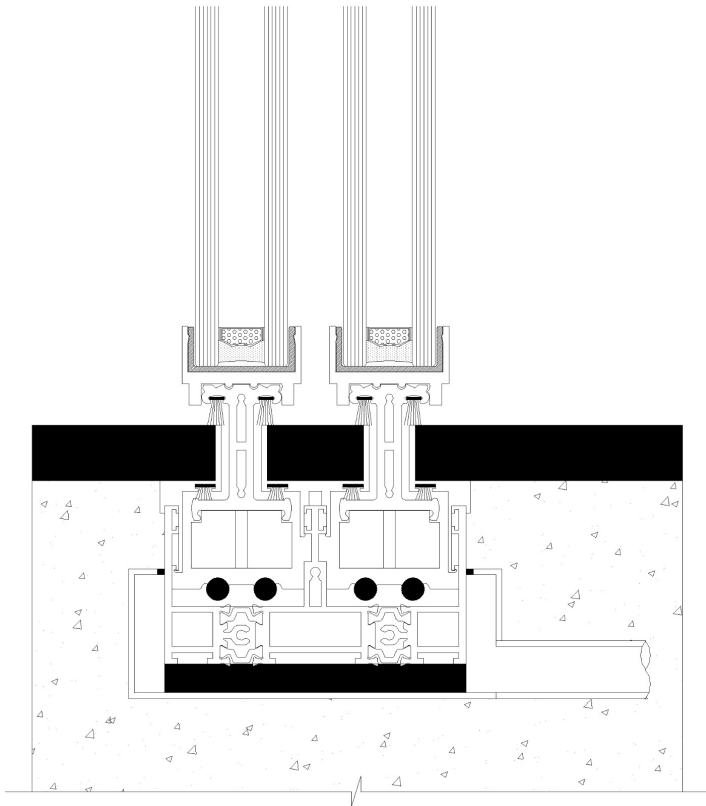
SYSTEM

Stainless steel sliding rail

The stainless steel sliding rail, discreetly embedded within the lower frame profile, ensures effortless and noiseless operation when opening and closing the transparent components.

Roller carriage

The self-centering roller carriage, seamlessly integrated into the lower section of the sliding leaf, remains hidden from view. These top-notch stainless steel rollers provide excellent load stability and effortless operation in daily use, accommodating leaf weights of up to 1000 kg.



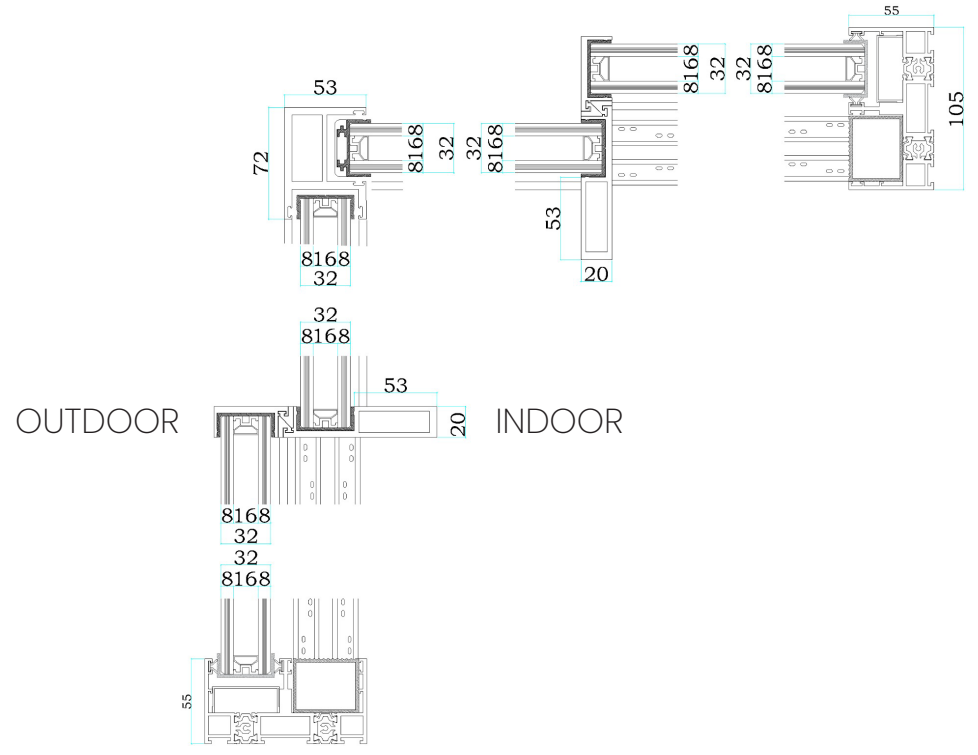
Fitted-flush-to-floor

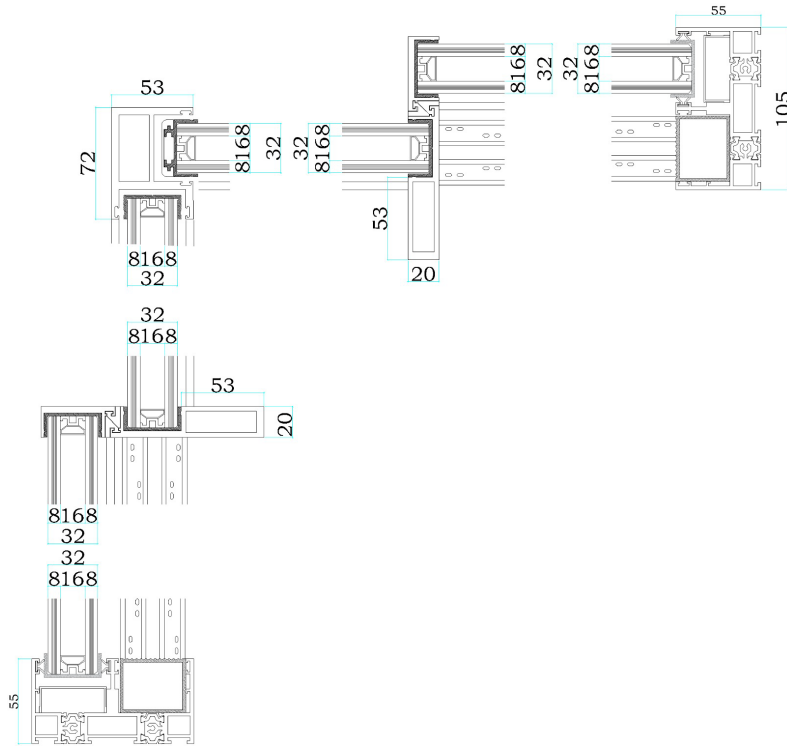
The outer frame can be flush mounted along all sides into the walls, the ceiling, and the floor, resulting in a seamless, barrier free transition from indoor to outdoor spaces. The floor profile, featuring an integrated stainless steel sliding rail, aligns perfectly with the floor level, offering easy maintenance and a hassle-free experience.

Drainage

Effective drainage control is accomplished through a purpose built PVC hollow chamber drainage profile integrated into the aluminum frame. Alternatively, you can opt for a concealed system with a stainless steel-covered drainage gutter. The drainage profile features locating grooves for connecting the EPDM film.

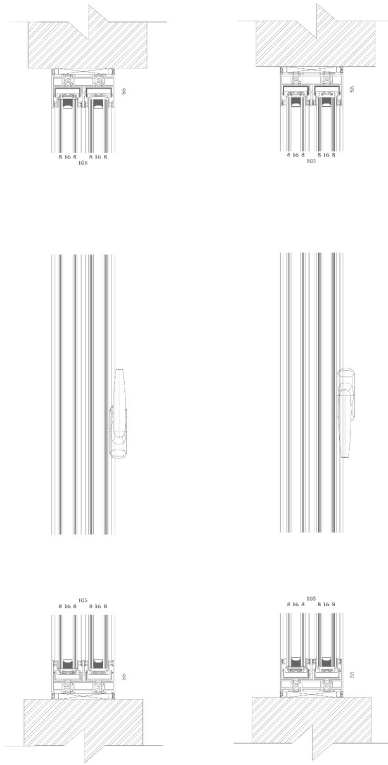
17





Corner-post-free

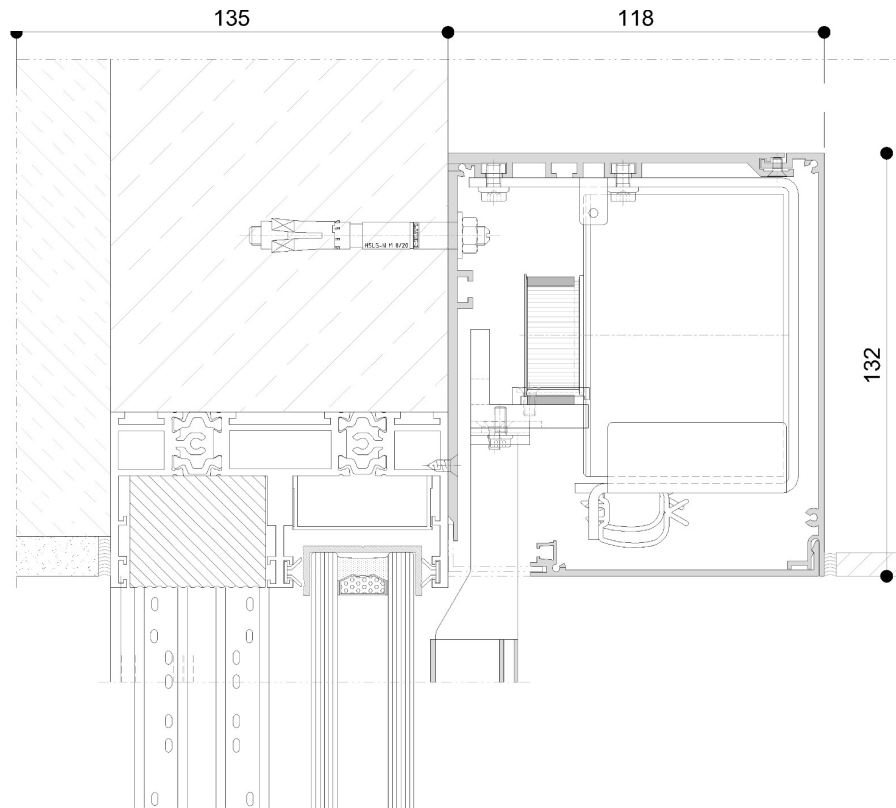
Architecture demands room and adaptability. Hearne minimal systems provide both in terms of versatile configuration choices and seamless connection flexibility. This sliding window system offers the flexibility of 1-, 2-, 3-, and 4-track sliding options, as well as fixed window installations. It enables continuous inside and outside corner solutions without any obstructive posts and concealed pocket wall solutions.



Manual Locking

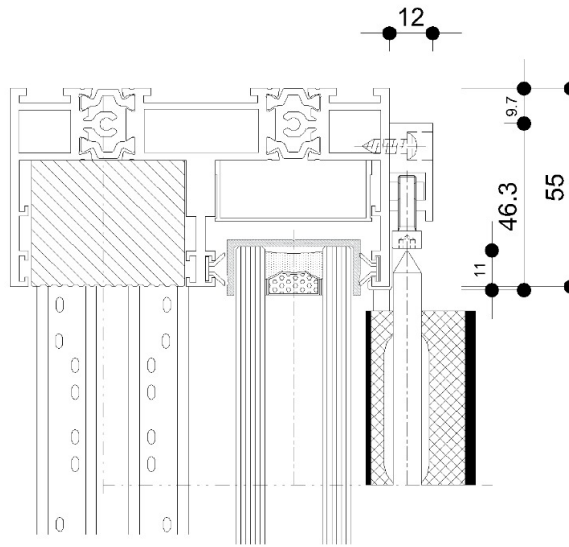
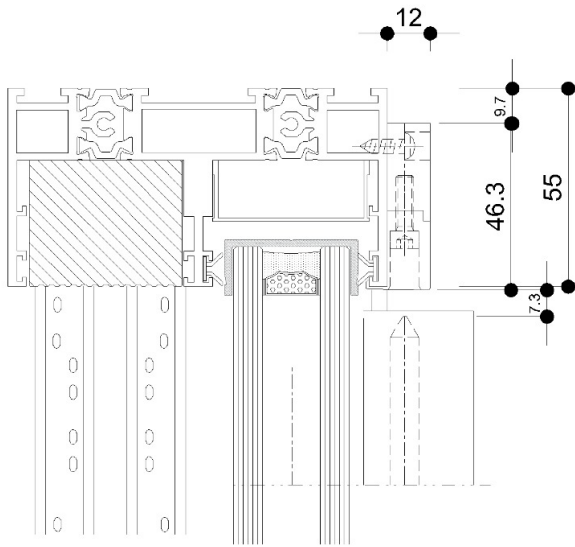
The multipoint locking mechanism is discreetly housed within the handle, double vent, or junction profile of the sliding leaf. You can operate it using a stylishly designed lever, with or without a cylinder lock, ensuring both security and elegance.

Illustration shows a possible design variant



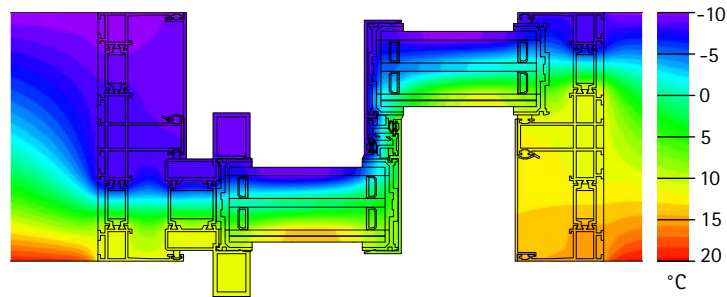
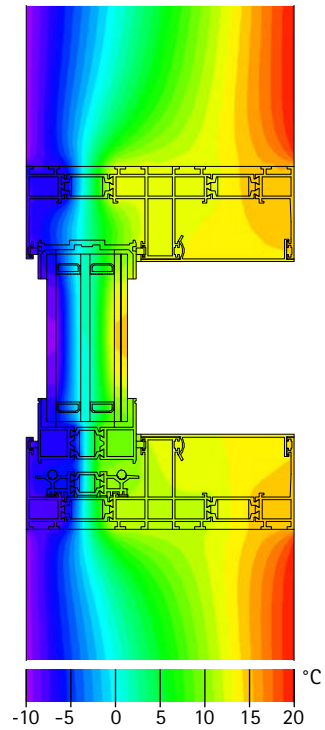
Motors / E-lock

Based on the specific system configuration, concealed electric drives and locks can be incorporated to enhance operational convenience. You have the choice of automatic locking, which includes remote control and home automation integration, as well as manual locking options via a wall switch. A single motor with a V-belt can smoothly operate multiple sliding leaves with a total weight of up to 2000 kg. This enables the telescopic opening of large glass facades, providing a spacious and elegant entrance.



Security

The multi-point locking system provides burglary resistance and is certified to meet the burglary protection standard. To enhance security, the system can be equipped with integrated opening and locking monitoring capabilities and can be connected to standard external monitoring systems. This ensures a high level of security for your space.



Energy

The Hearnne minimal systems® Vista series, designed for triple glazing, offers continuous and efficient thermal insulation. This system is exceptionally well suited for passive house construction, especially when utilizing high-quality insulation glazing.





**CERTIFICATE OF INCORPORATION
OF A
PRIVATE LIMITED COMPANY**

Company Number **13872431**

The Registrar of Companies for England and Wales, hereby certifies that
HEARNNE ALUMINUM SYSTEMS LTD

is this day incorporated under the Companies Act 2006 as a private company, that the company is limited by shares, and the situation of its registered office is in England and Wales.

Given at Companies House, Cardiff, on **26th January 2022**.

The above information was communicated by electronic means and authenticated by the Registrar of Companies under section 1115 of the Companies Act 2006



Companies House

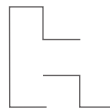


THE OFFICIAL SEAL OF THE
REGISTRAR OF COMPANIES

Certification

The system's quality adheres to the most stringent standards, proudly bearing the 'Made in the United Kingdom' mark, and assures optimal protection against heavy rain, wind loads, air infiltration, and noise transmission. All new designs and systems maintain a commitment to high-quality standards and align with the latest advancements in technology and techniques.

MADE IN
UNITED KINGDOM



HEARNNE
ALUMINIUM SYSTEMS



minimal windows®

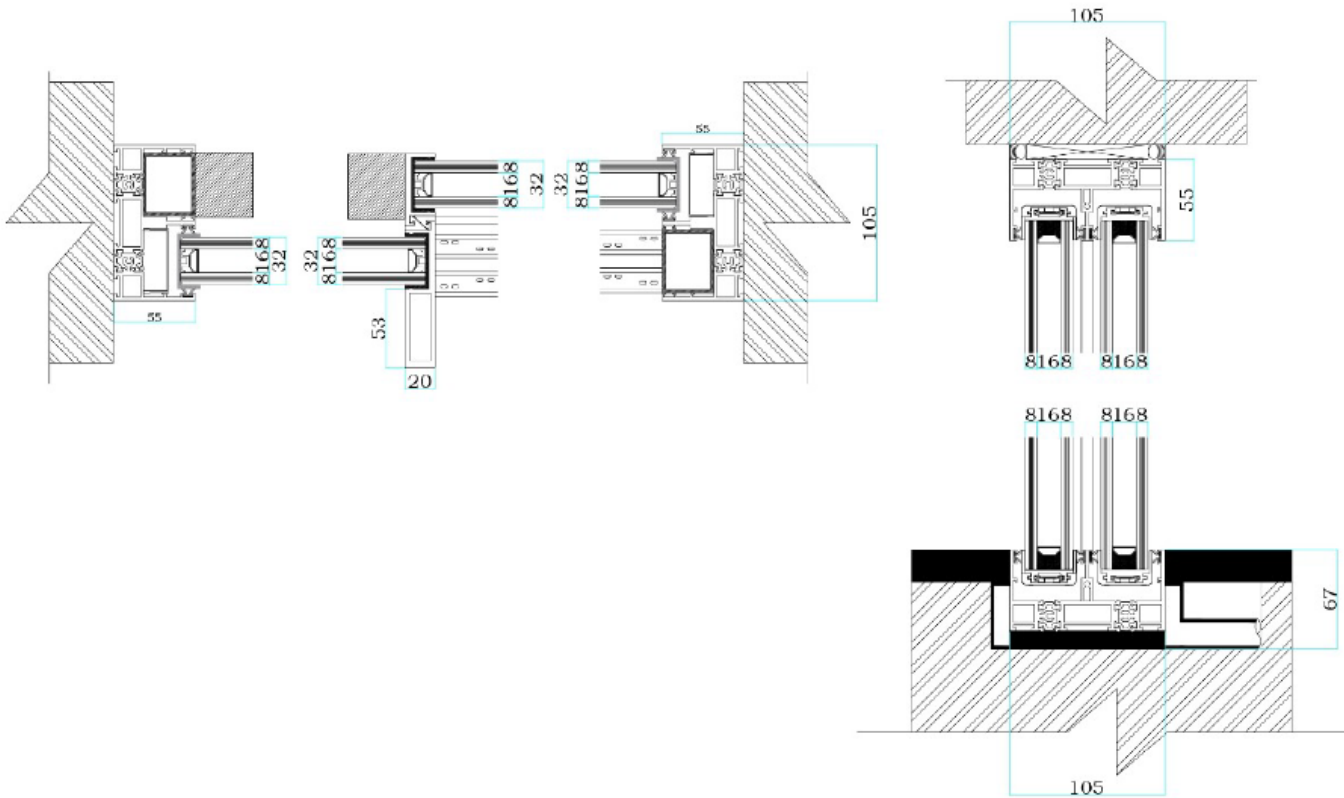
PRODUCT



minimal system® H2O

Hearne minimal systems® is an almost frameless sliding window system known for its exceptional ease of operation. It boasts an impressively slim leaf profile with a width of only 20 mm. This system incorporates double insulation glazing within thermally separated aluminum frame profiles, ensuring excellent insulation properties.

29



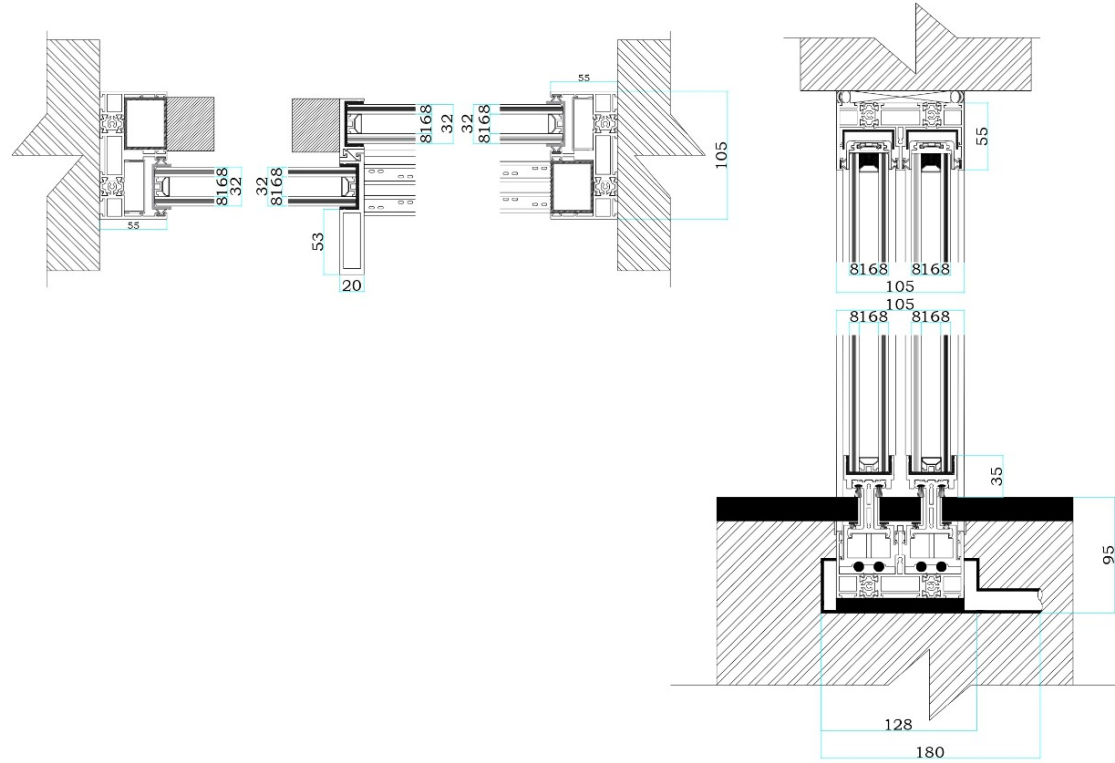
30

Facing width from centre point	20 mm
Maximum leaf size	up to 8.5 m ² / fixed light up to 18 m ²
Maximum leaf height	4 m
Maximum leaf weight	500 kg
Glass thickness	32 to 34 mm (Insulating double glazing or heat Mirror glass)
Thermal transmission coefficient	$U_w \geq 1.1 \text{ W}/(\text{m}^2\text{K})$ (depending on glass type & dimensions)
Motorisation	up to 1,500 kg total weight
Barrier-free accessibility	DIN 18040-1, DIN 18040-2
Air permeability	class 4 according to EN 12207
Driving rain tightness	class 7A according to EN 12208
Resistance to wind load	class C4/B5 according to EN 12210
Sound insulation	up to 39 dB achievable
Resistance to burglary	up to WK2 (RC2) according to EN 1627

minimal system® H2O+

Hearne minimal systems® is an almost frameless sliding window system known for its exceptional ease of operation. It boasts an impressively slim leaf profile with a width of only 20 mm. This system incorporates double insulation glazing within thermally separated aluminum frame profiles, ensuring excellent insulation properties.

32



Facing width from centre point	20 mm
Maximum leaf size	up to 12 m ² / fixed light up to 18 m ²
Maximum leaf height	4.5 m
Maximum leaf weight	1,000 kg
Glass thickness	32 mm (triple insulation glass or special glass types)
Thermal transmission coefficient	$U_w \geq 0.70 \text{ W/m}^2\text{K}$
Motorisation	up to 2,000 kg total weight
Barrier-free accessibility	DIN 18040-1, DIN 18040-2
Air permeability	class 4 according to EN 12207
Driving rain tightness	class E1050 according to EN 12208
Resistance to wind load	class C5 according to EN 12210
Sound insulation	up to 45 dB achievable
Resistance to burglary	up to WK2 (RC2) according to EN 1627





minimal windows®

ACCESSORIES

Glazing

Hearne minimal systems provides high-quality double and triple insulation glass (thermal insulation glass) with LowE coating, delivering exceptional thermal insulation values that effectively reduce energy loss. The space between the glass panes is filled with either Argon or Krypton, enhancing insulation properties.

You can choose from a range of glass options, including float glass, LSG laminated safety glass from float, LSG insulation glass from TSG, or TSG glass, or combinations thereof, according to your specific functional and structural requirements.

The thermal insulation values of the sliding system (U_w value) are determined by Hearne minimal systems' partners, considering the insulation values of the glazing (U_g value) and the glazing rim to the edge (Ψ value), ensuring the overall thermal performance of the system.

We offer a range of special glass types, including:

- LOWE® sun-reflective glass
- Safety glass starting from P4A (anti-burglary glass)
- Noise insulation glass
- Bullet-resistant glass
- Privacy protection glass with or without sandblasting
- Decorative glass
- Insulation glass with solid glass corners
- Glass with adjustable transparency (privacy glass)

These options provide versatility for various design and functional requirements.



1
4









HEARNNE

2 Frederick Street, Kings Cross, London, United Kingdom, WC1X 0ND

info@hearnne.com

www.hearnne.com



Authorized Dealer (Middle East)

ALGHAZI ALUMINIUM & METAL INDUSTRIES

Dubai - UAE | +971 4-339 33 04

info@alghazigroup.ae

www.alghazigroup.ae